

## Creating an ISO file of Microsoft Flight Simulator Disk so that you don't need to have the physical disk inserted every time you want to start MSFS2020.

You will need a utility to create an ISO file from your MS Flight Simulator Disk 1 (Windows can natively read and mount ISO files but cannot create them without some third party application).

I used IsoCreator from sourceforge.net, but there are others.

<https://sourceforge.net/projects/iso-creator-cs/>

This utility hasn't been updated in a while – but worked fine for me – your mileage may vary. Always check such downloads with your chosen virus scanner, I accept no liability if this application causes you any issues, download at your own risk (or do some research and find your own utility).

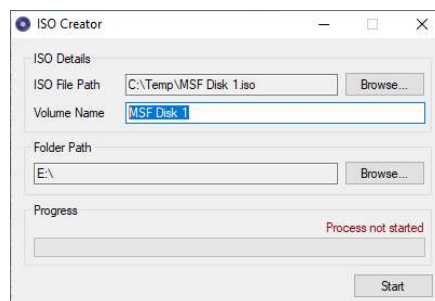
Once installed run the application.

You need to set the 'ISO File Path' to the location and file name of the ISO file which you wish the utility to create. I don't believe file name doesn't matter for this but I chose to name it based on the volume name of MS Flight Simulator Disk 1.

The Volume name needs to be the same as DVD Disk 1 which you have inserted into your DVD drive – i.e. 'MSF Disk 1' – note there are two spaces in this Volume name, capitalisation should also be the same as the real DVD volume name.

The folder path needs to be the drive letter of your DVD drive which has DVD Disk 1 inserted into it (in my example that's drive E:, yours may be different).

Here are the settings entered and ready to go in my case, adjust yours as required.



Click the Start button and wait.

When I used this particular utility it appeared to 'hang' at 99% completed – I was patient and did not close or interrupt the process – eventually it completed OK without issue (it may have taken 15-20 minutes after it had got to 99% and looked like it had stopped).

Once completed you should have a MSF Disk 1.iso file in the location you chose, the file should be approximately 8.4Gb in size (8,377,190 KB in my case).

To mount this ISO file as a drive letter (in Windows 10) simply double click on the file. Windows will automatically assign a spare drive letter to the new drive. (You eject it later by right clicking on the drive letter it assigned and selecting 'Eject').

You can then remove the physical DVD disk (and drive if yours is a portable one) and start MS Flight Simulator 2020. The application should find your 'virtual' DVD drive with the DVD image present.

Done. HTH

V1.0, 23<sup>rd</sup> August 2020.